

(2006/3/16 2005/12/25)

Comparison in Morphotectonic Analysis of Selected Basins in Nineveh Governorate North of Iraq

Hekmat S. Al-Daghastani Rayan Gh. Al-Banaa
Remote Sensin Centre
Mosul University

ABSTRACT

The present study deals with morphotectonic analysis of eight surface drainage basins which varies in their basin geometry. These basins are distributed within the major structural zones in Nineveh Governorate north of Iraq. Analysis of longitudinal valley profiles of these basins indicated their effects by a group of morphotectonic variables, which characterized each distinct segments differently.

Both bifurcation ratio and mean order length relationships against the drainage basin orders showed clear evidences to differentiate between effected and non effected basins with active tectonic deformation. These comparisons demonstrate a new concept that might be able to utilize in morphotectonic comparison studies.

.(Selby, 1985)

.(Bloom, 1998)

)

Al-Dagastani and Al-

.(Dagastani, 1996

(Bifurcation ratio)

(Mean order length)

(Weighted bifurcation ratio)

(Drainage basin relief)

(Bull and Kmuepfer, 1987; Morritts and Vincent, 1989; Al-Daghastani, 1995; Al-Daghastani and Campbell, 1995; Singh et al., 1996).

.()

...

.

:

(Al-Daghastani and Daood, 2005)

(Hack, 1973)

(Knick points)

.(Yousif, 1987)

:

:

:

()

-

-

.(Al-Kadhimi, 1996)

()

(Aqra-Atrosh Structural Zone)

(Maqlub- Ain Safra Structural Zone)

.(Al-Daghastani and Salih, 1993)

(Al-Daghastani and Salih, 1993)

:

...

()

:

:

.()

()

)

.(

()

:

:

:

-

. ()

()

.()

()

.(Al-Daghastani and Daood, 2005

)

()

:

:

:

()

()

(Al-Daghastani and Al-Daghastani, 1996 and 1994)

)

.(

...

()

:

:

:

()

.

-

.()

()

.()

()

:

:

:

()

()
()
-
(Al-Daghastani and Daood, 2005)

() :
:

-
()
() .()

(Al-Daghastani, 1996)
()

(Al-Daghastani, 1996) :

...

: :

()

. -
.

()

.(Al-Daghastani and Al-Daghastani, 1996)

(Al-Daghastani and Al-Daghastani, 1996)

:

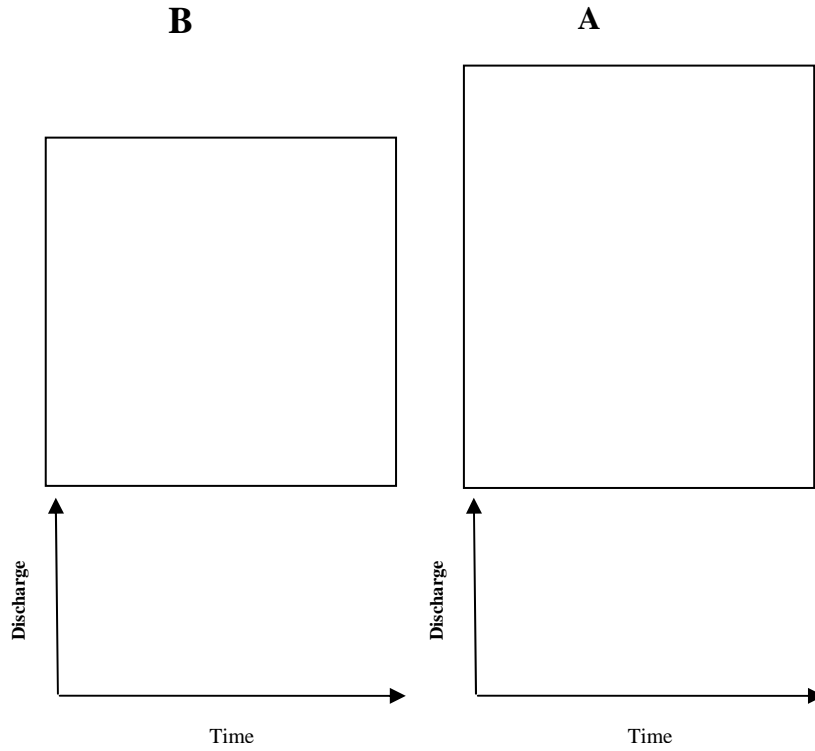
(Horton, 1945)

(Strahler, 1964)

.(-)

() (Strahler, 1964)

(Mc Cullaph, 1986)



3.3	20	
-		

2.5	20	
8	8	
-		

.	
.	
2.76	

.	
.	
5.25	

(Mc Cullaph, 1986; Strahler, 1964)

(B,A) ()

(Elongated catchment) (A)

...

(Circular catchment) (B)

(A)

(Homoclinal structural

(Fault line scarp)

()

(A)

.ridge)

(Trellis)

()

(Dendritic)

(-3.3)

(B)

()

.(Yousif, 1987)

()

()

2003 Excel

()

:

:

:

.()

)

()

.(

:

:

()

(Semi-Log)

()

(.)

(R2)

.()

(.)

()

(.)

(.)

(R2)

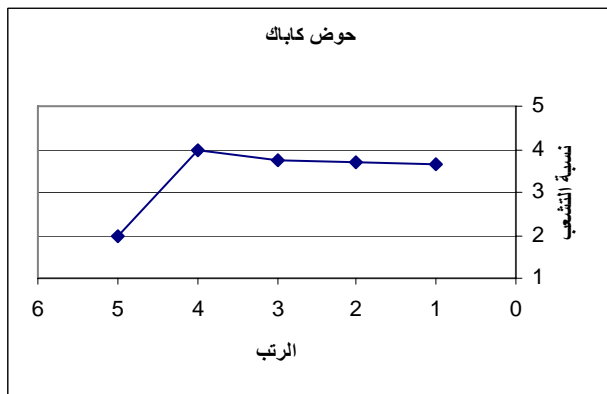
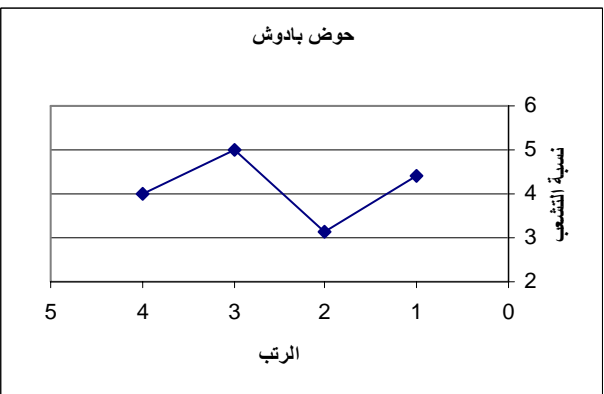
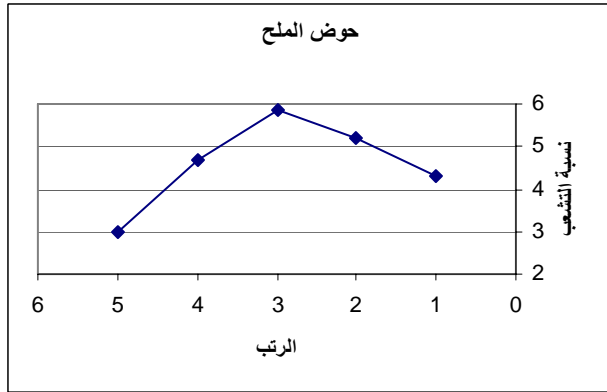
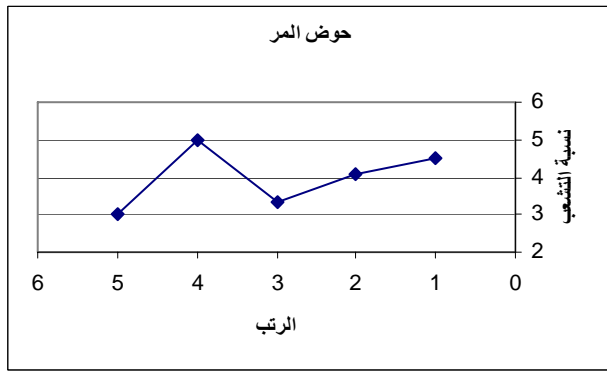
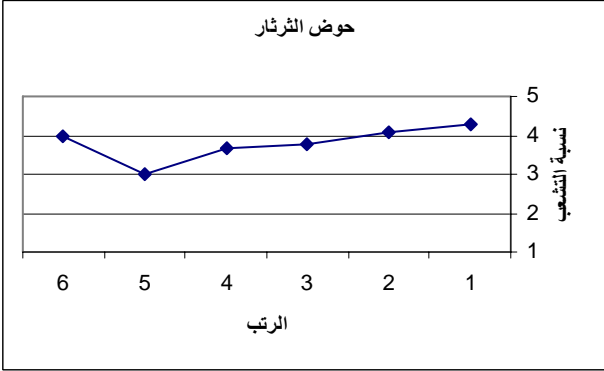
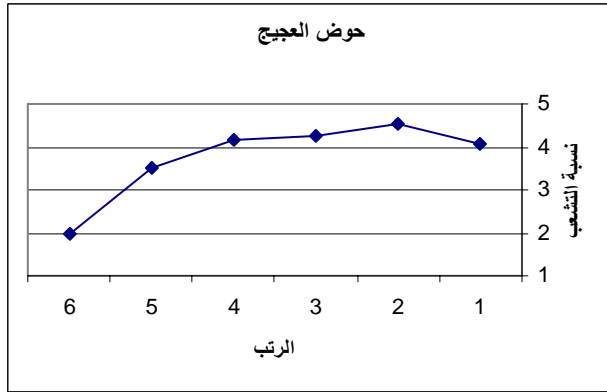
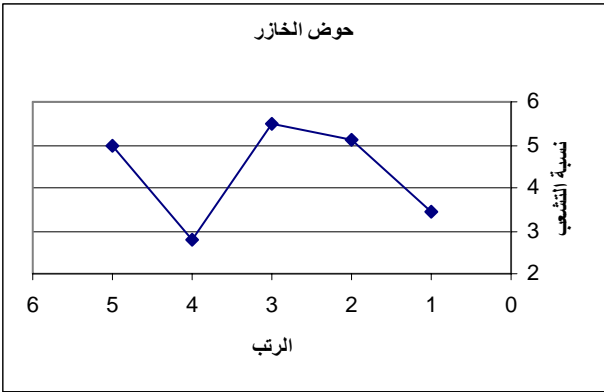
:

11.71	.			3.55	.			1.49	.			1.04	.		
13.96	.			4.72	.			2.02	.			1.50	.		
9.45	.			4.63	.			1.97	.			1.30	.		
.		
1.56	.	21.9		0.5	.			0.17	.			0.09	.		
.		
.		
4.4	.	35		2.4	.	72		0.88	.	98		0.48	.	194	

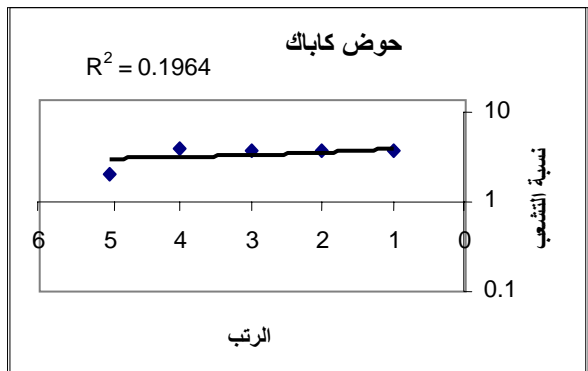
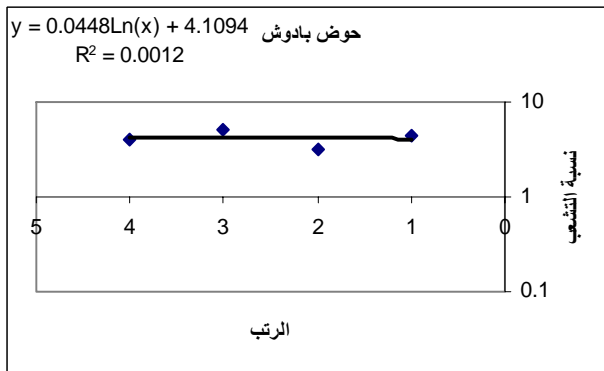
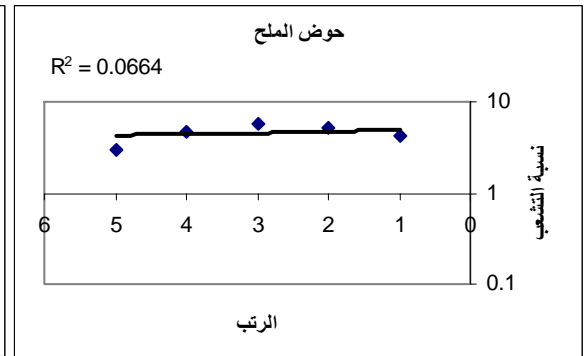
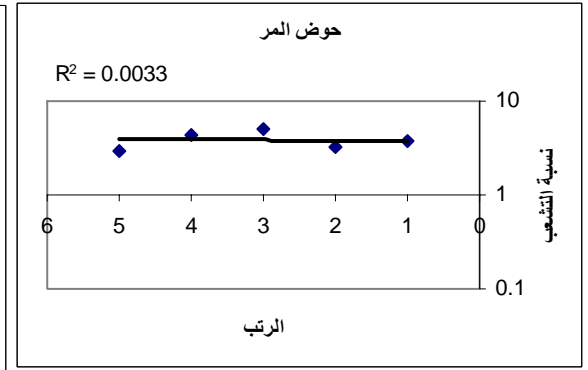
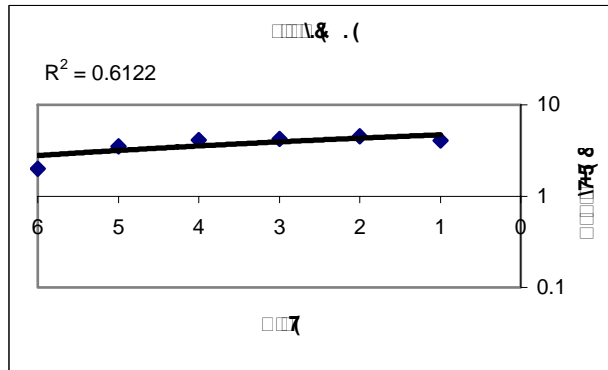
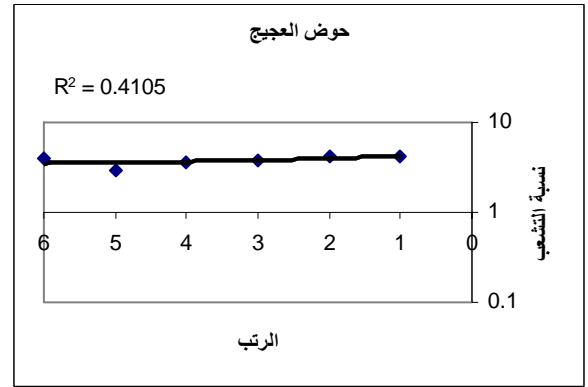
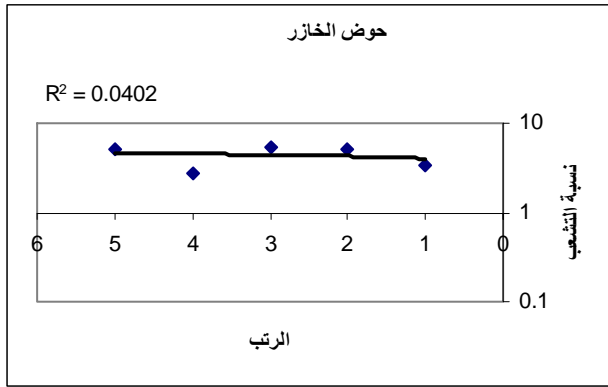
								72.0	-			21.0			
				85	-			18.5	2.0			26.42	.		
				14.5	-			24.5	4.0			11.75	.		
									-			.			
								15.0	-			2.66			

...

									-						
									-				-		
									-	11		9.5	.	19	



:



:

...

()

.()

(Curvimeter)

)

.()

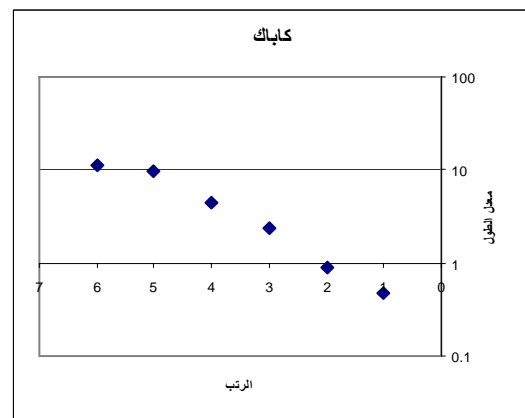
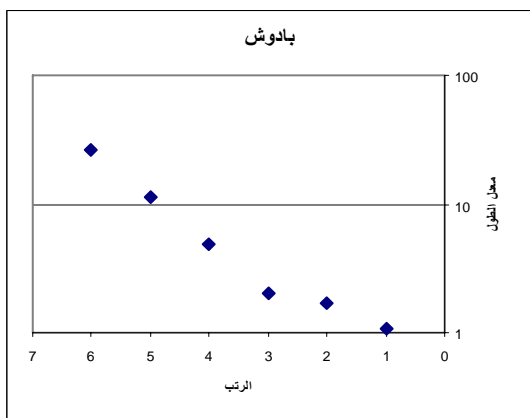
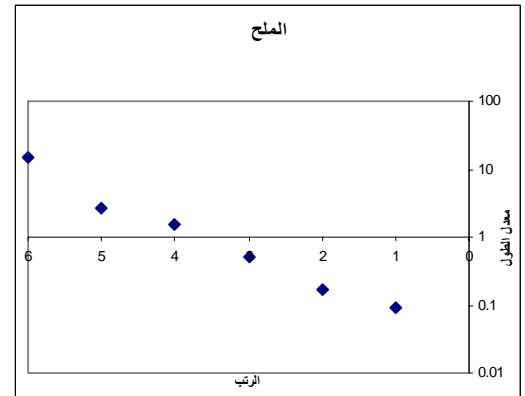
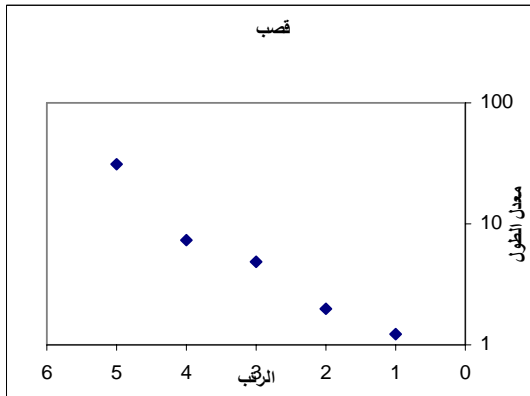
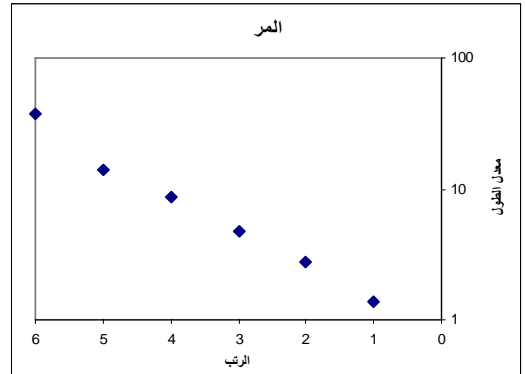
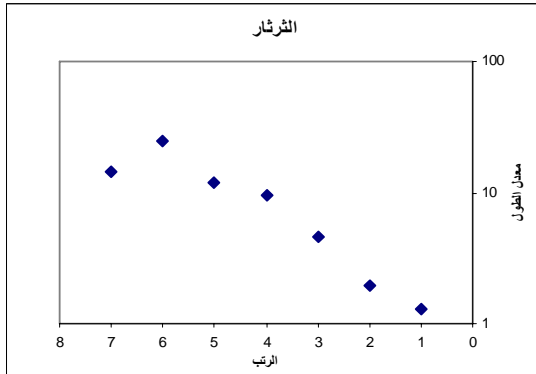
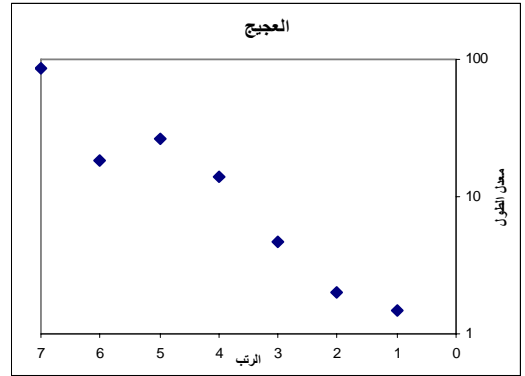
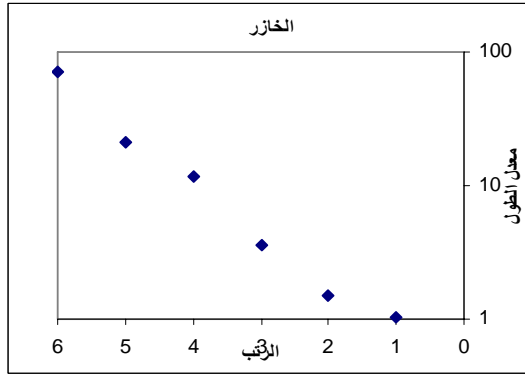
(

()

()

:

				Km			Km2	
.			
.			
.			
5.23			
.			
.			
.			
.			



...

)

()

(

)

(

(

)

.() 1/50.000

()

(-)

(Daly, 1989)

:

-1

-2

-

()

(6.309-4.641) (. - .)

-

-

()

()

-

-

(. - .)

(. - .)

- Al-Daghastani, H.S. and Al-Daghastani, N.S., 1994. The Determination of the Response of Drainage System to the Tectonic Activity and Geomorphology of Jabal Ishkaft area NW Iraq Using Remote Sensing Techniques. *Jour. Geol. Soc. of Iraq*. Vol. 27, No. 2, pp.36-51.
- Al-Daghastani, H.S., 1995. Impact of the Structural Deformations on the Drainage of Bashiqa Structure. *Journal of Water Resources*, Vol. 14, No.1, pp.2-9.
- Al-Dagastani, H.S. and Campbell, J., 1995. The Evolution of the Lower Waipara River Gorge in Response to Active Folding in North Canterbury. *ITC Journal*, Vol. 3, pp. 246-255.
- Al-Daghastani, H.S., 1996. Impact of the Morphotectonic of Allan Anticline on the Site of Babush Dam Using Remote Sensing Data. *Raf. Jour. Sci*, Vol. 7, No. 2, pp.85-96.
- Al-Daghastani, H.S. and Al-Daghastani, N.S., 1996. Morphotectonic of Sasan, Ishkaft and Gusair Structures, North Western Iraq Using Remote Sensing Data. *Rafidain Journal of Science*, Vol. 7, No.1. pp.99-113.
- Al-Daghastani, H.S. and Daood, M.T., 2005. Correlation Between Seismic Activity and Tectonic Elements in Nineveh Governorate. *Iraqi Journal of Earth Sciences*, Vol. 5, No. 2, pp.1-8.
- Al- Kadhimi, 1996. Tectonic Map of Iraq, Geosurve, Printed and Published by the State Establishment of Geological Survey and Mining, Baghdad, Iraq.
- Bloom, A.L., 1998. *Geomorphology; a Systematic Analysis of late Cenozoic Landforms*. by Prentice-Hall. Inc., Simon and Schuster, A Viacom company, upper Saddle River, New Jersey, 07458, 482, p.
- Bull, W.B. and Kmuepfer, P.L.K., 1987. Adjustments by the Charwell River, New Zeland to the Uplift and Climatic Changes, *Geomorphology*, vol. 1, No. 1, pp.15-32.
- Daly, M.C., 1989. A Plate Tectonic Model of the N. Arabian Margin in: Bp-Idemitsu Joint Study Special Report on NW Iraq, OEC Library, Baghdad, Iraq.
- Hack, J.T., 1973. Stream Profile Analysis and Stream Gradient Index. *Jour. Of Research of U.S Geological Survey*, Vol. 1, pp.421-429.
- Horton, R.E., 1945. Erosional Development of Streams and their Drainage Basins; Hydrophysical Approach to Morphology. *Bull. Geol. Soc. America* Vol. 56, pp. 275-370.
- Morritts, D. and Vincent, K.R., 1989. Geomorphic Response of Costal Streams to Low, Intermediate, and High Rates of Uplift, Mendocino Triple Junction Region, Northern California. *Geol. Soc. of America Bull.* Vol. 101, No. 11, pp.1373-1388.
- Selby, M.J., 1985. *Earth's Changing Surface; An Introduction to Geomorphology*. Clarendon Press, Oxford, 607 p.
- Singh, I.B., Chandel, R.S. and Misra, A., 1996. Neotectonic Control on Drainage System in Gangetic Plain, Uttar Pradesh. *Jour. Geological Soc. of India*. Vol. 47, pp.599-609.
- Strahler, A.N., 1964. Quantitative Geomorphology of Drainage Basins and Channel Networks. Sect.4-11 in V.T.chow(ed.) *Handbook of applied hydrology*. (McGraw-hill;New York).
- Yousif, H.S., 1987. The Application of Remote Sensing to Geomorphological Neotectonic Mapping in North Canterbury, New Zeland. Ph. D. Thesis, University of Canterbury, ch.ch. 1. New Zealand, unpublished, 310 p.